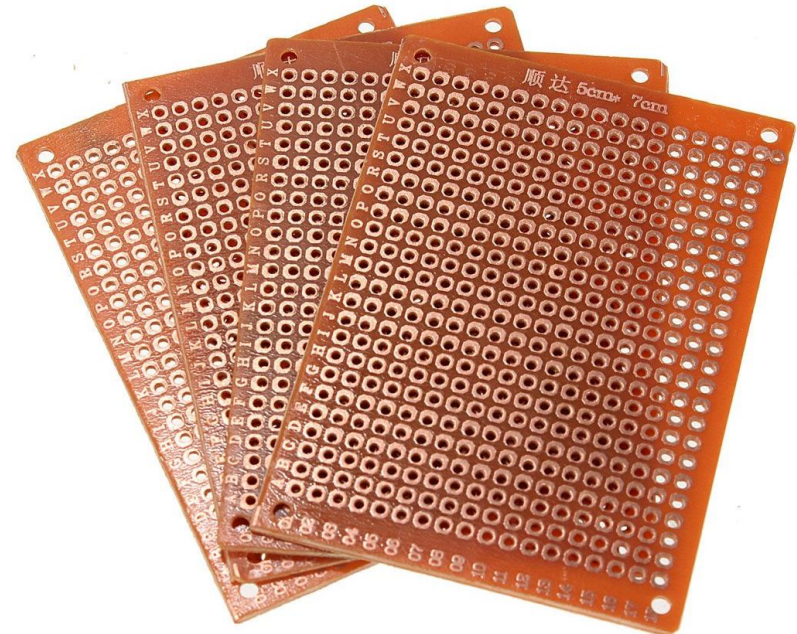
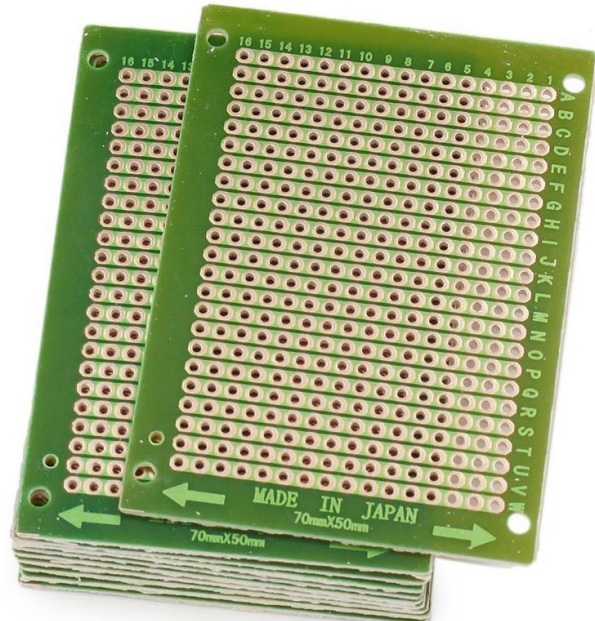
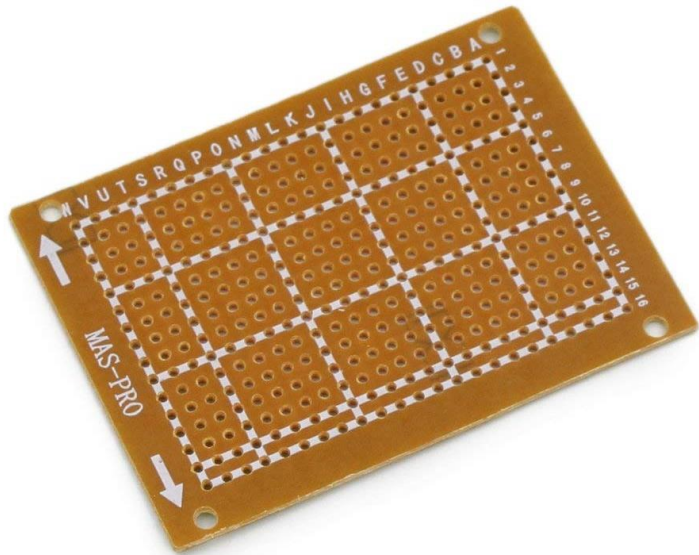
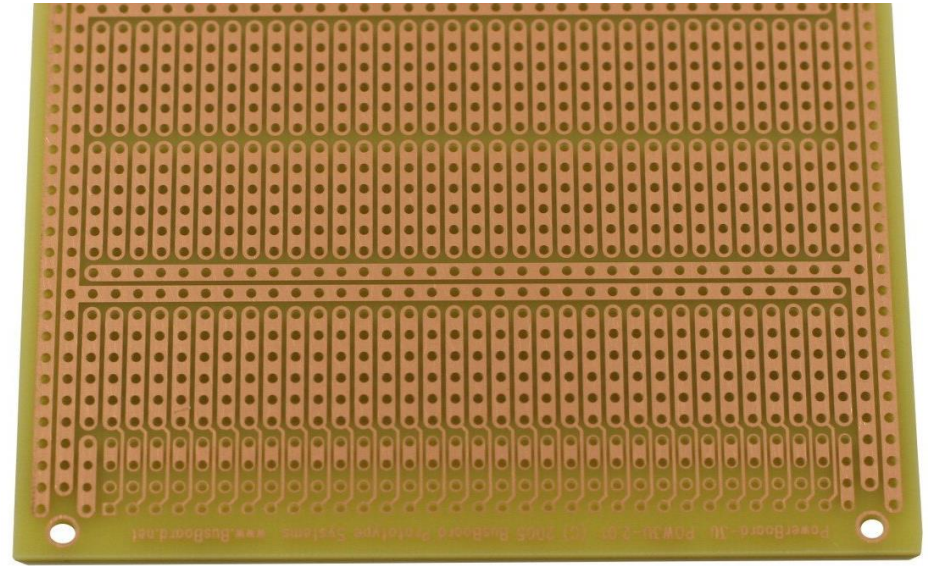
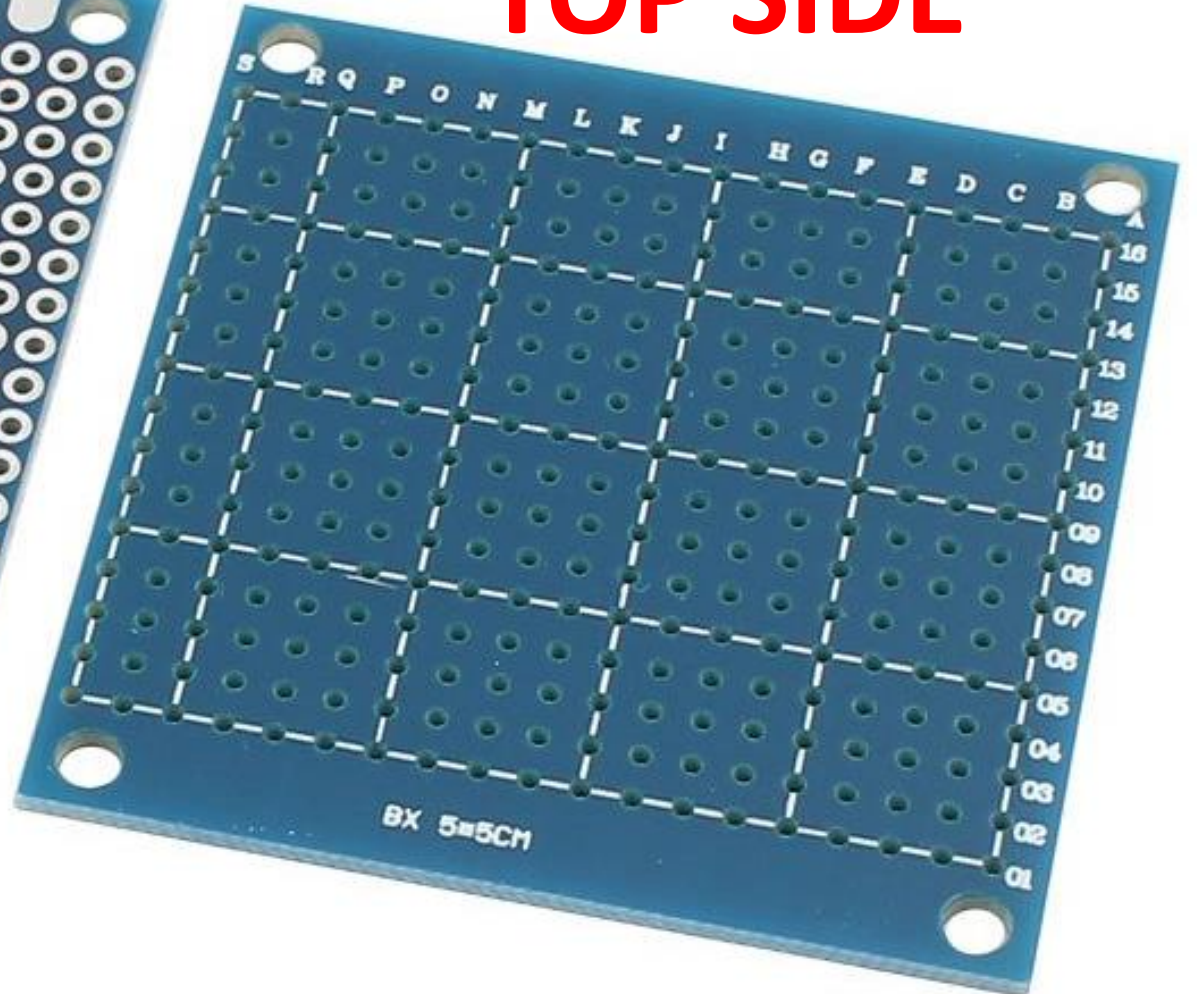


- Prototyping PCB
- Protoboard
- Perfboard
- Solderable Breadboard

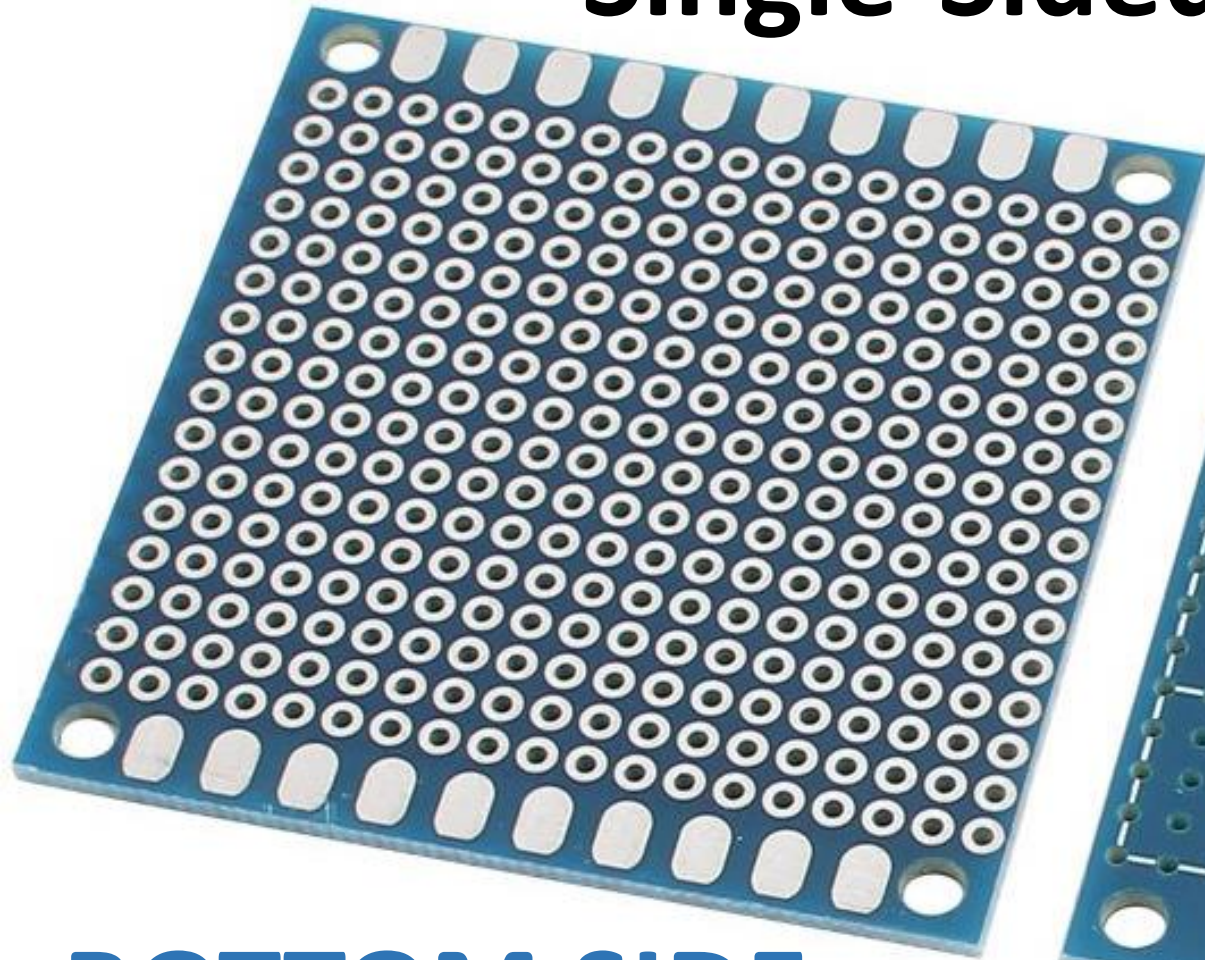


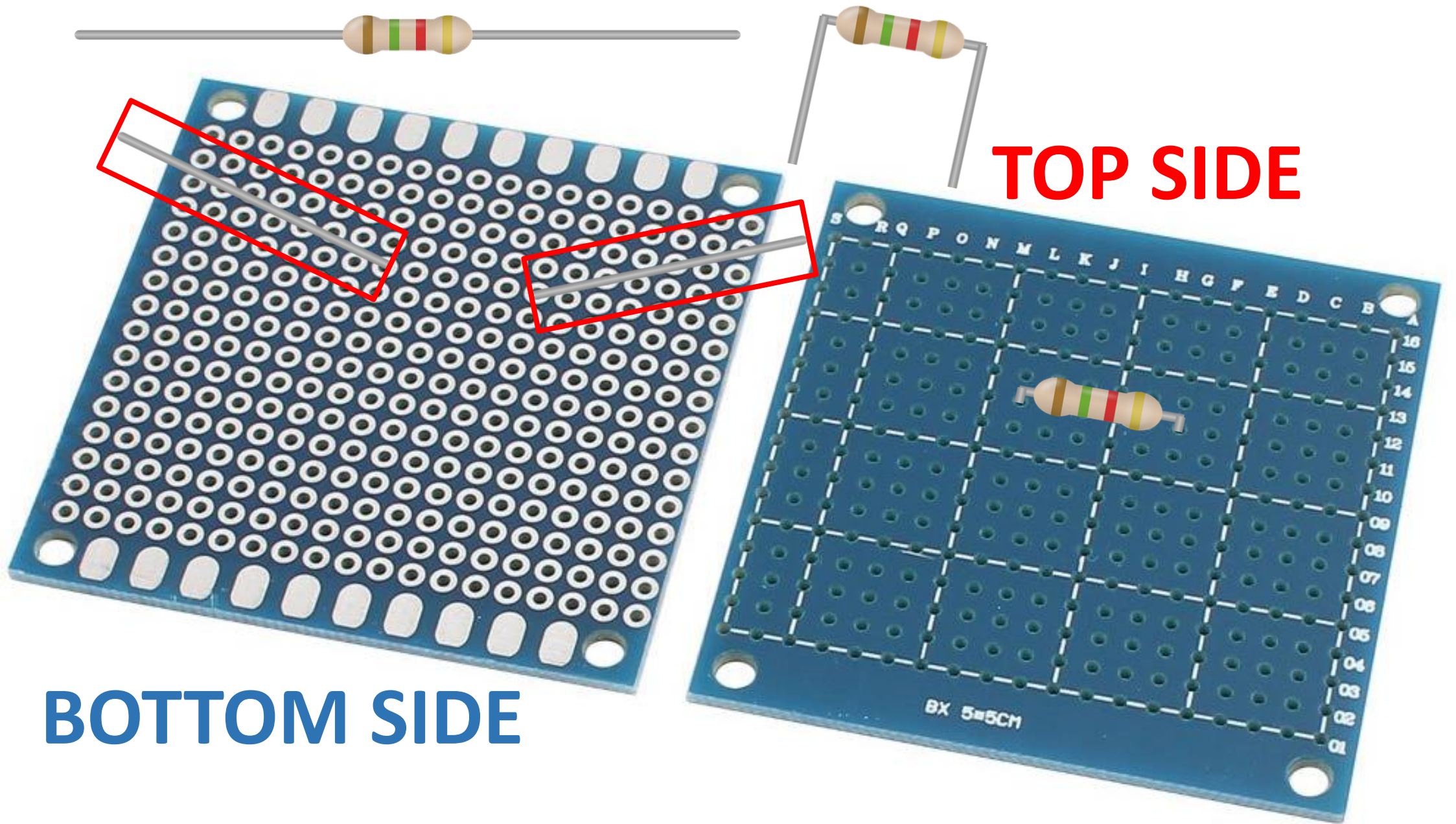
Single-Sided Board

TOP SIDE



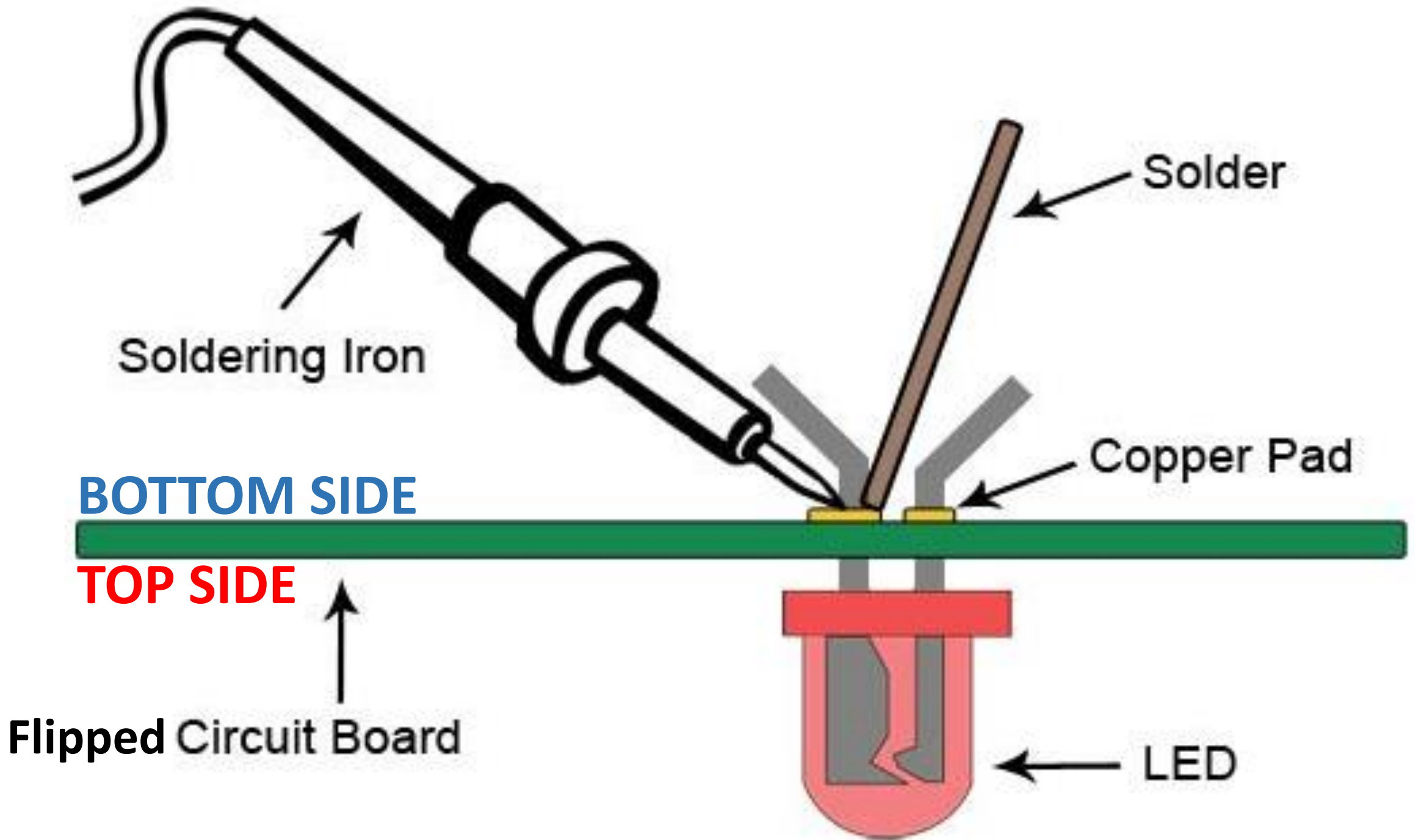
BOTTOM SIDE

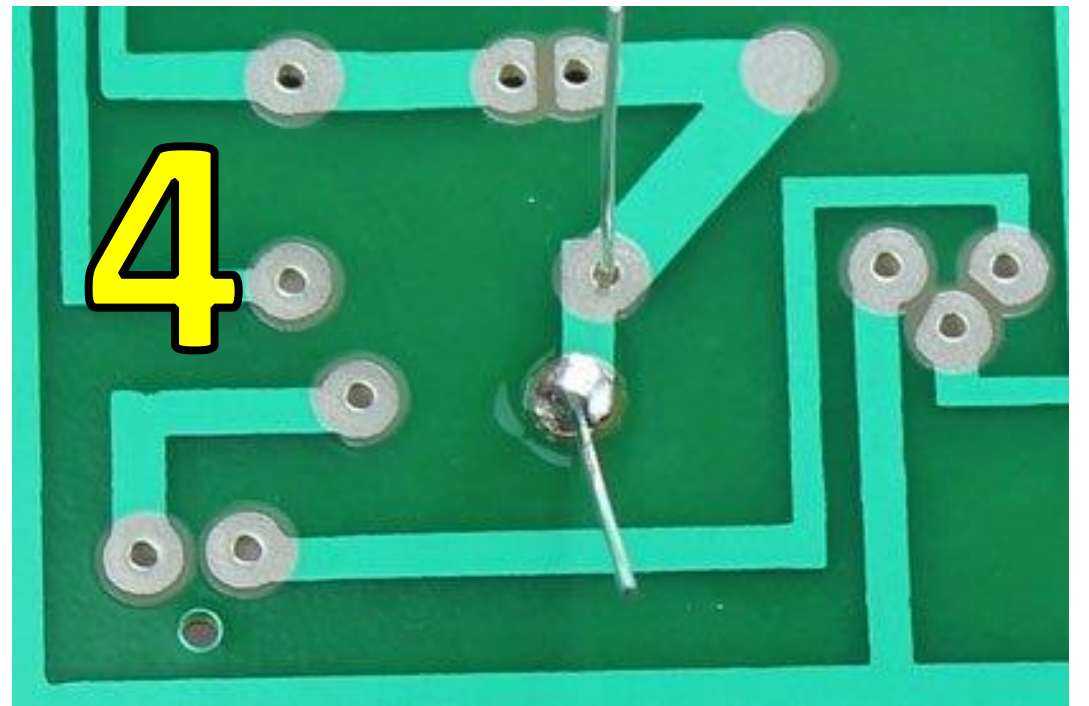
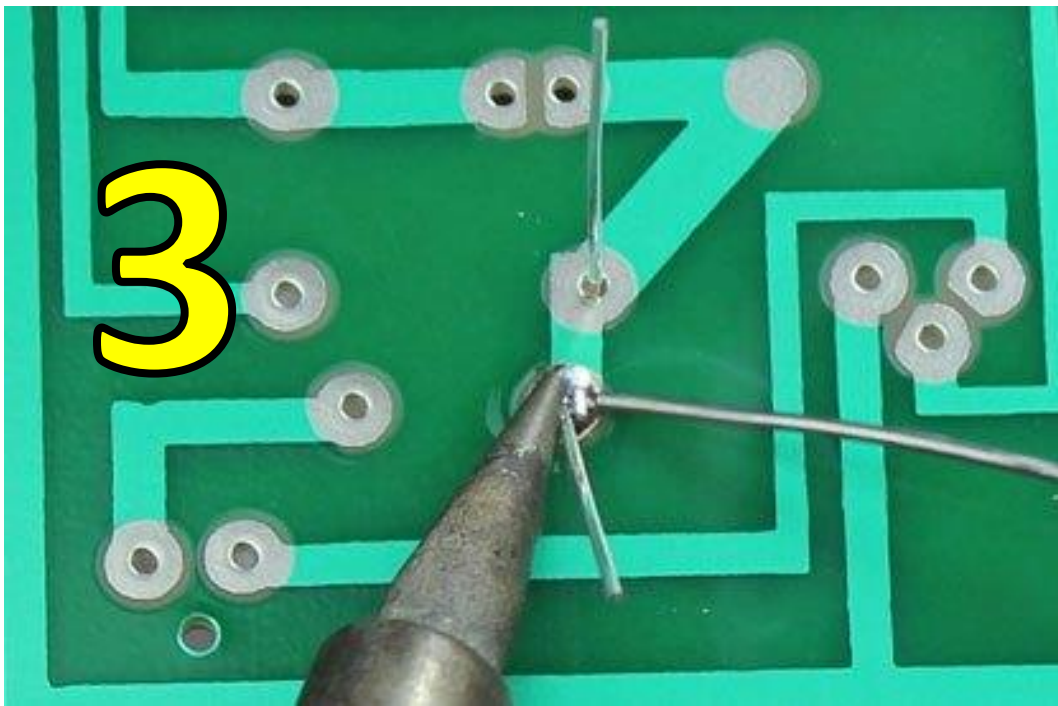
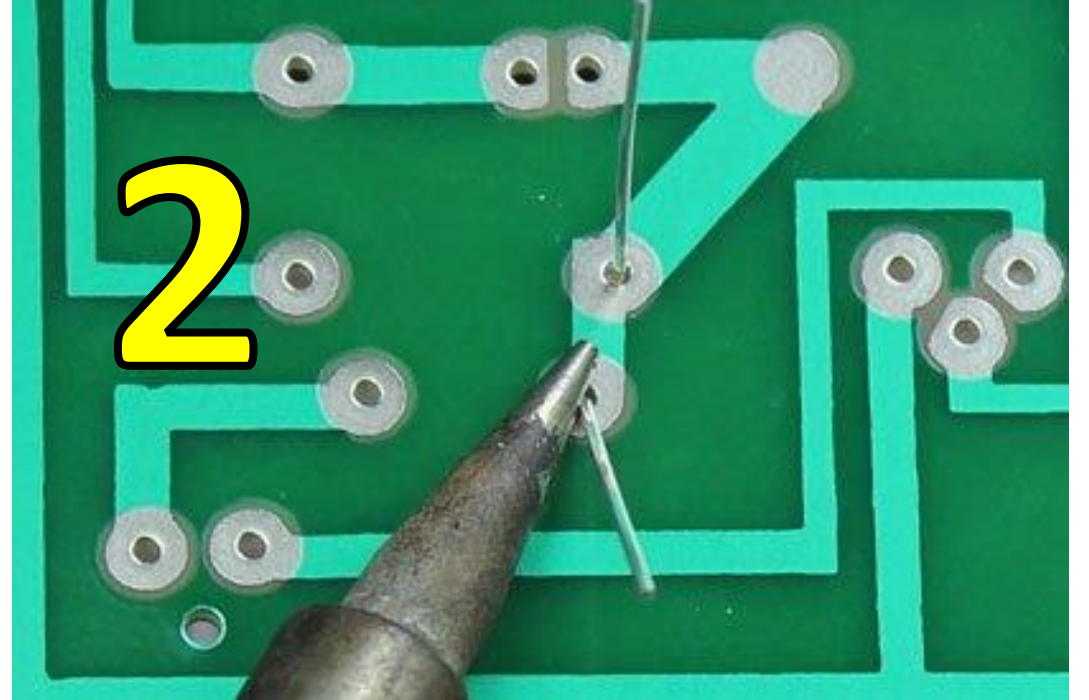
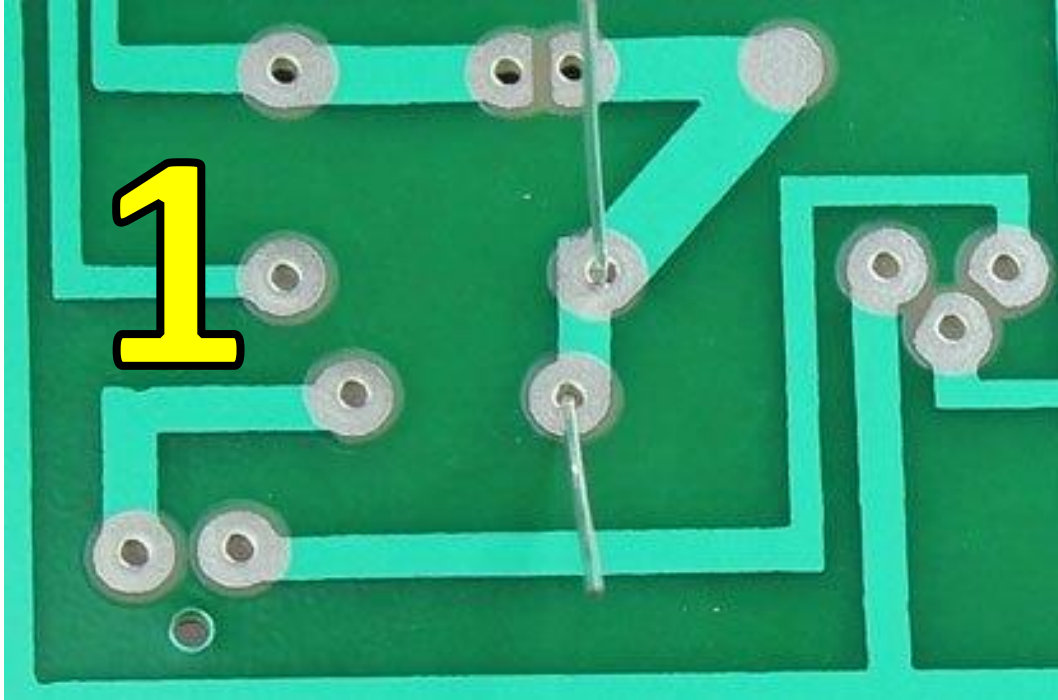


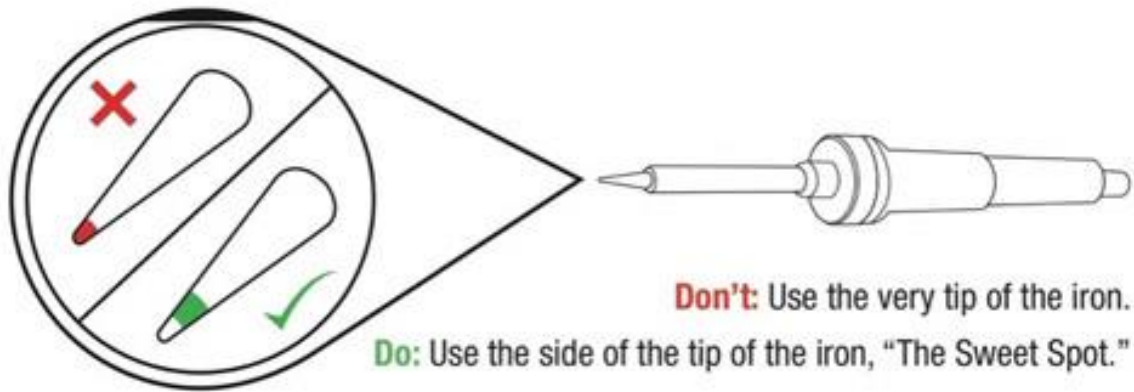


TOP SIDE

BOTTOM SIDE







Don't: Use the very tip of the iron.

Do: Use the side of the tip of the iron, "The Sweet Spot."



Do: Touch the iron to the component leg and metal ring at the same time.



Do: While continuing to hold the iron in contact with the leg and metal ring, feed solder into the joint.



Don't: Glob the solder straight onto the iron and try to apply the solder with the iron.



Do: Use a sponge to clean your iron whenever black oxidization builds up on the tip.



A

Solder flows around the leg and fills the hole - forming a volcano-shaped mound of solder.



B

Error: Solder balls up on the leg, not connecting the leg to the metal ring.
Solution: Add flux, then touch up with iron.



C

Error: Bad Connection (i.e. it doesn't look like a volcano)
Solution: Flux then add solder.



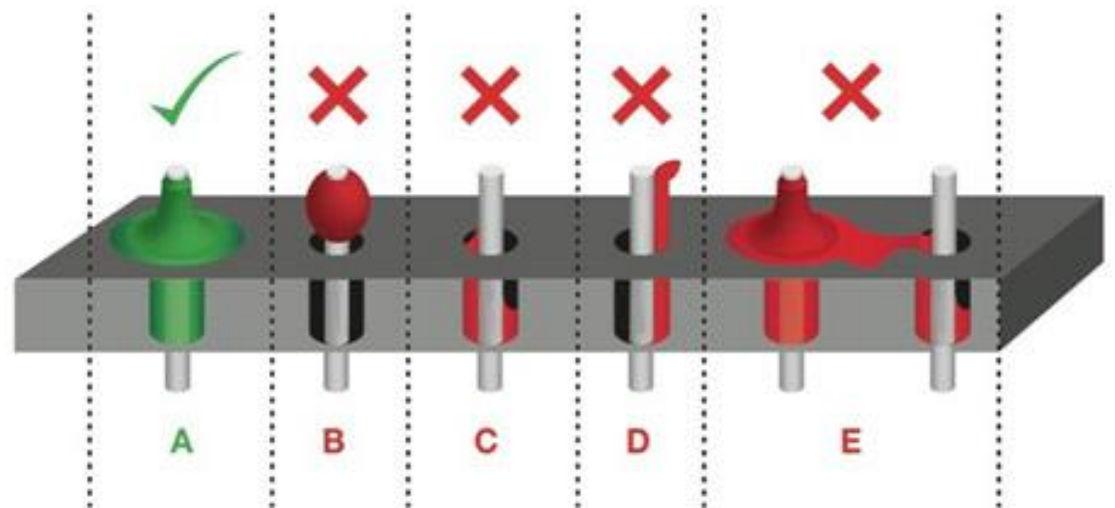
D

Error: Bad Connection...and ugly...oh so ugly.
Solution: Flux then add solder.



E

Error: Too much solder connecting adjacent legs (aka a solder jumper).
Solution: Wick off excess solder.



- Add multimeter continuity test images